

# 4207 W Linwood Ave. Turlock 118.43 Acres, Industrial Zoning

118.43 Acres In INDUSTRIAL ZONING in Turlock. This Parcel sits in the City Limits and in the WISP Planned Development. Very close to City Services and Minutes from Highway, Freeway, and Ports. Located near Large Manufacturing, Commercial, and Industrial related Businesses. User Friendly and Benefits from this Planned

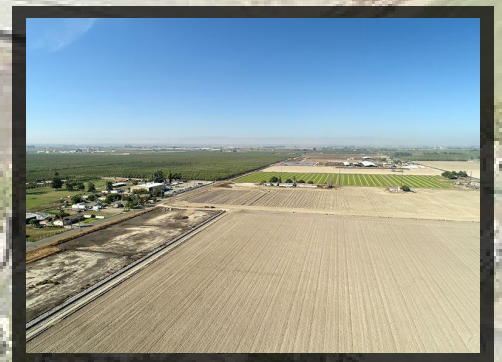
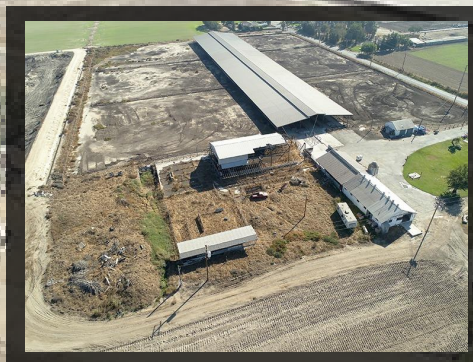
*Price Reduced - \$15,395,900*

**Clarence Oliveira, REALTOR**

**DRE: #01225017**

**Phone: 209-988-5254**

**[www.clarenceoliveira.com](http://www.clarenceoliveira.com)**



**Century 21 MM**  
**1351 Geer Rd**  
**Turlock, CA 95380**



**+/- 120 Acres on 3925 W. Linwood Ave.  
Turlock CA 95380**

Google Earth

2000 ft

**Location:**

4207 W Linwood Ave, Turlock CA  
95380

Stanislaus Co

**Area:** Turlock SW, So of Canal, W of  
Lander Rd

**Zoned:** Industrial

**Details:**

Approx Lot Size: 118.430

Listing#: 18071485

Crops: Row Crops

Irrigation: Pub Water Over 500 Ft

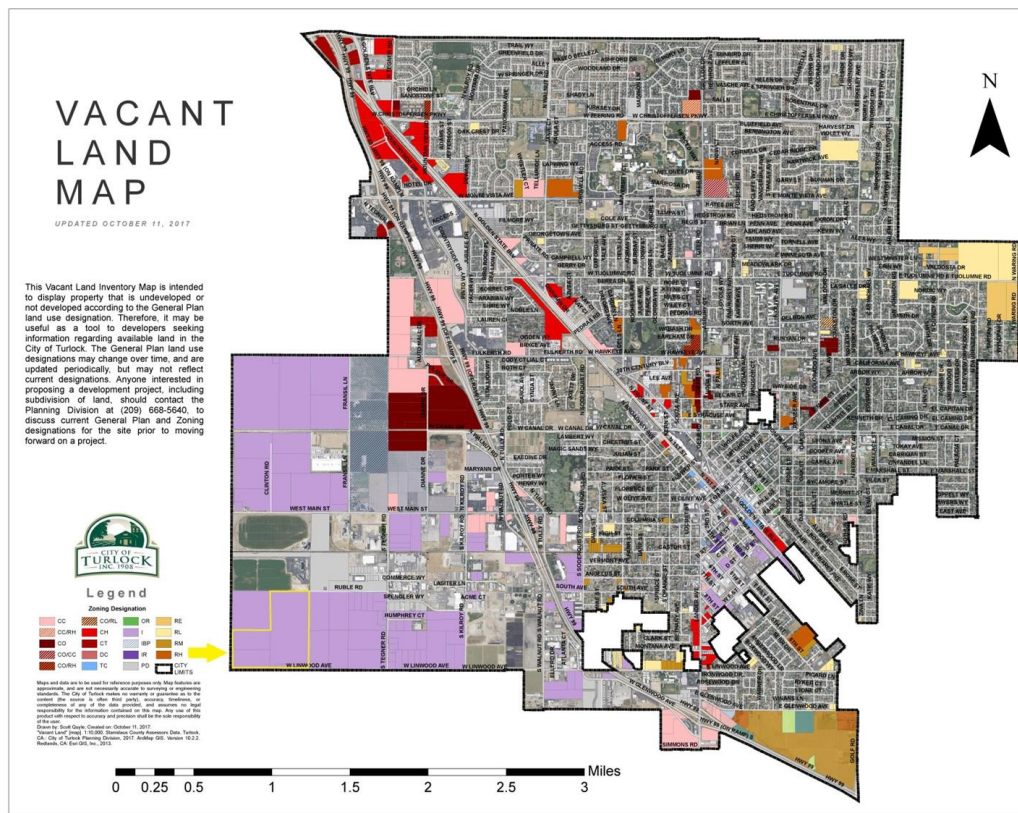
Water: Domestic Well w/Pump,

Irrigation District, Public Over 500 Ft

Sewer: Septic at Site

Utility: Electricity to Site

*Price Reduced - \$15,395,900*



**Clarence Oliveira, REALTOR**  
**DRE: #01225017**  
**Phone: 209-988-5254**  
**www.clarenceoliveira.com**